

NGA-East 2nd SSHAC Workshop: Introduction

Yousef Bozorgnia, Ph.D., P.E.

*PEER Executive Director;
NGA-East Project Manager*

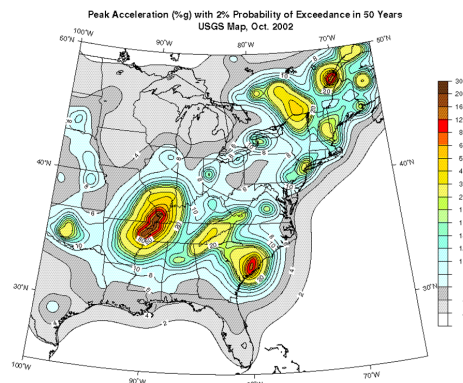


NGA-East SSHAC Workshop 2

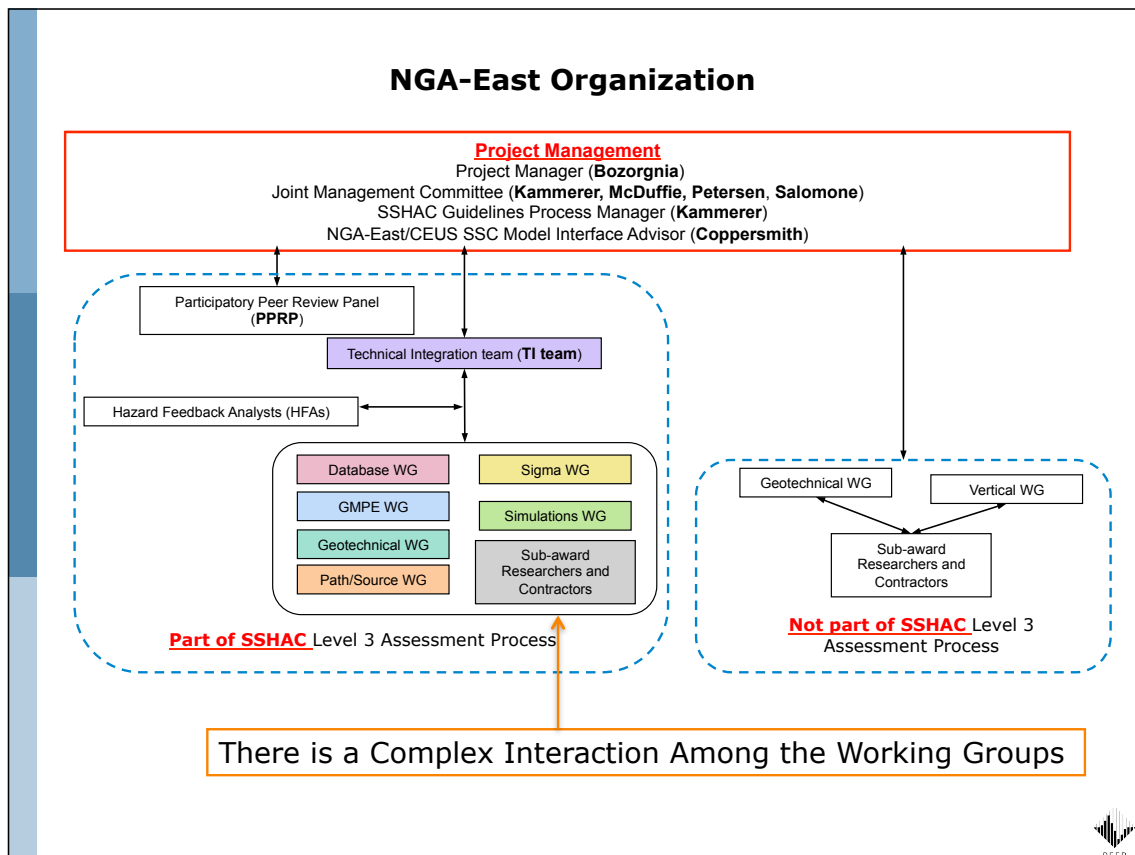
October 11, 2011

NGA-East

- Goal: To develop next generation Ground Motion Prediction Equations (GMPEs) for Central & Eastern North-America
- Stable Continental Regions (SCRs)
- Sponsors: **NRC, DOE, EPRI, USGS**



NGA-East Project Organization & Working Groups



TI Team (Technical Integrator)

TI Team	Norman	Abrahamson	UC Berkeley
	Christine	Goulet	PEER, UC Berkeley
	Linda	Al Atik	PEER, UC Berkeley
	Gail	Atkinson	Univ. of Western Ontario
	Robert	Graves	USGS, Pasadena
	Eric	Thompson	Tufts Univ.
	Robert	Youngs	Amec

PPRP (Participatory Peer Review Panel)

PPRP	Julian	Bommer	Imperial College
	John	Adams	Geological Survey of Canada
	Jon	Ake	NRC
	John	Ebel	Boston College
	Jeff	Kimball	National Nuc. Security Admin.
	Rich	Lee	Los Alamos National Lab

Database Working Group

Database Working Group (DWG)	Chuck	Mueller	USGS
	Gabriel	Toro	Risk Engineering, Inc.
	David	Boore	USGS
	Kenneth	Campbell	EQECAT, Inc.
	Christopher	Cramer	University of Memphis
	Robert	Herrmann	Saint Louis University
	Walter	Silva	Pacific Engineering, Inc.

Geotech Working Group

Geotechnical Working Group (GWG)	Youssef	Hashash	University of Illinois (UIUC)
	Kenneth	Campbell	EQECAT, Inc.
	Ellen	Rathje	Univ. of Texas - Austin
	Walter	Silva	Pacific Engineering, Inc.
	Jonathan	Stewart	UCLA
	Albert	Kottke	PEER, UC Berkeley

“Path/Source” Working Group

"Path/Source" Working Group (PWG)	Martin	Chapman	Virginia Tech.
	Gail	Atkinson	University of Western Ontario
	David	Boore	USGS
	Kenneth	Campbell	EQECAT, Inc.
	Robert	Herrmann	Saint Louis University
	Shahram	Pezeshk	Univ. of Memphis
	Walter	Silva	Pacific Engineering, Inc.

Simulations Working Group

To generate validated simulated GMs for CENA to be used by GMPE developers

Simulation Working Group (SimWG)	Ralph	Archuleta	UC Santa Barbara
	Norm	Abrahamson	UC Berkeley
	Martin	Chapman	Virginia Tech.
	Walter	Silva	Pacific Engineering, Inc.
	Paul	Somerville	URS Corp.
	Yuehua	Zeng	USGS, Colorado

Sigma Working Group

It is interacting with NGA-West2 Project

Sigma Working Group (SigWG)	Linda	Al Atik	PEER, UC Berkeley
	Jack	Baker	Stanford University
	Kenneth	Campbell	EQECAT, Inc.
	Brian	Chiou	Caltrans
	Ellen	Rathje	Univ. of Texas - Austin
	Adrian	Rodriguez-Marek	Virginia Tech.
	Gabriel	Toro	Risk Engineering, Inc.
	Melanie	Walling	USGS Golden

Vertical Ground Motion Working Group (non-SSHAC)

It is interacting with the NGA-West2 program

Vertical Ground Motion Working Group (VWG)	Sanaz	Rezaeian	PEER & USGS
	Gail	Atkinson	University of Western Ontario
	Yousef	Bozorgnia	PEER, UC Berkeley
	Walter	Silva	Pacific Engineering, Inc.

Project Schedule

- Current project end date:
 - September 30, 2014
- It depends on the flow of funding to initiate various research tasks

Workshops, technical meetings,...

- We will have numerous technical meetings & workshops
- As part of SSHAC process, like today, and also less formal meetings to:
 - To interact and communicate with the earthquake community
- PEER is co-sponsoring the August **2013 SMiRT** in San Francisco, CA
 - There will be a full session on NGA-East

Contact us...

- Overall NGA-East program:
 - Yousef Bozorgnia (yousef@berkeley.edu)
- TI Team:
 - Christine Goulet (goulet@berkeley.edu)
 - Norm Abrahamson (abrahamson@berkeley.edu)
- Status of contracts, invoices, no-cost-extensions, ...
 - Darlene Wright (ddwright@berkeley.edu)
- Travel expenses:
 - Yolanda West (ywest@berkeley.edu)

This workshop...

- The program is full
- This is a formal SSHAC workshop
- Rules of the workshop will be explained by Christine

Thank you for your participation