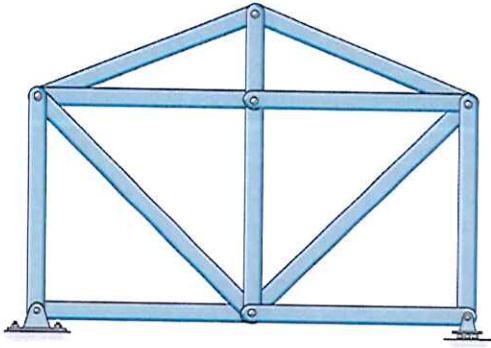


Example 3a-2. Classify each truss as determinate, indeterminate, or unstable.



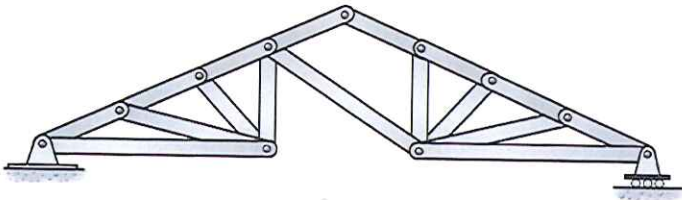
$$b = 12$$

$$r = 3$$

$$j = 7$$

$$b + r > 2j$$

INDETERMINATE 1<sup>st</sup> DEG.



$$b = 17$$

$$r = 3$$

$$j = 11$$

$$b + r < 2j$$

UNSTABLE